

### Product Features

- Ø IGMP snooping and GMRP for filtering multicast traffic
- Ø Port-based VLAN, IEEE 802.1Q VLAN, and GVRP to ease network planning
- Ø QoS and TOS, WRR/WFQ/SP to increase determinism
- Ø Layer2-4 Multi-Field classifier
  - Support 8-MultiField entry
  - Support traffic policy
  - Support Multi-Filed filter
  - Support copy to mirror port
  - Support trap to CPU por
- Ø Support Port mirror
- Ø Support auto-polarity for 10Mbps
- Ø Support 16 VLAN (IEEE Std 802.1q)
  - Shared/Independent VLAN Learning
  - Support insert, remove tag
  - Support VLAN priority remarking
- Ø Support STP, RSTP and MSTP
- Ø Support port-based access control
- Ø Supports rate control
  - In/Out port rate control
  - Traffic Policy



### Product Description

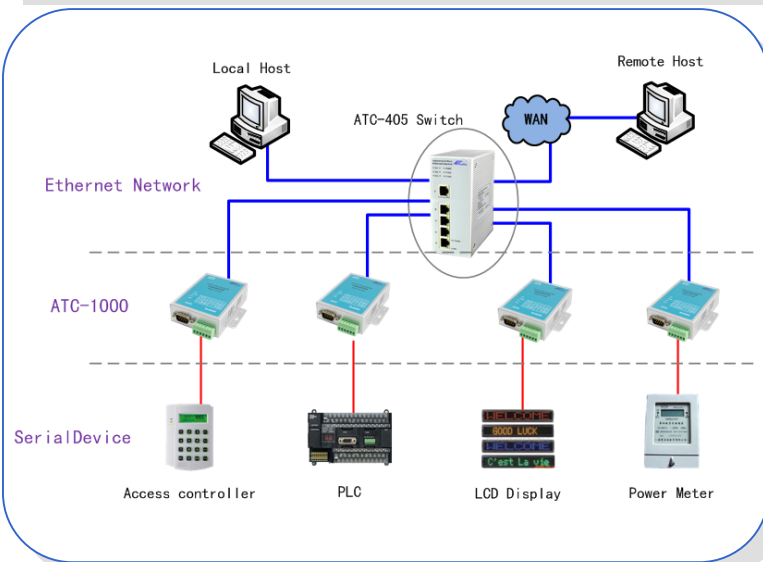
The ATC-405/ATC-408 are standalone 5-port managed Ethernet switches and operates in store and forward mode. ATC-405/ATC-408 have a lot of rich feature for different application, include router application, firewall, IEEE 802.1Q, IGMP snooping, policy-based QoS. It provides powerful QoS function, include traffic policy, traffic meter, and flexible queue scheduling (WRR/WFQ/SP). In virtual LAN, IP175DLF support port-based VLAN and IEEE 802.1Q tag-tagged VLAN (up to 16VLAN groups). With the broadcast storm protection function support ATC-405/ATC-408 increase the reliability and availability of your industrial Ethernet network. Models with a wide operating temperature range of -40 to 85°C are also available, and the switches support advanced management and security features, making the ATC-405 switches suitable for any harsh industrial Environment. ATC-405 series switches can be installed

### Package Checklist

- Ø ATC-405 or ATC-408 switch 1 PCS
- Ø Documentation and software CD 1PCS

### Order Information

- ATC-405 5-Port 10/100M Fast Managed Industrial Ethernet Switches
- ATC-405U 5-Port 10/100M Fast Un-managed Industrial Ethernet Switches
- ATC-408 8-Port 10/100M Fast Managed Industrial Ethernet Switches
- ATC-408U 8-Port 10/100M Fast Un-managed Industrial Ethernet Switches



### Contact us

Shenzhen ATC Technology Co., Ltd  
 Room 803, Block B, Building 4, Tian'an Cyber Park,  
 Longgang District, Shenzhen, China, 518172

## Specifications

Network Interface		
Interface Type	10/100BaseT(X) auto negotiation speed, Full/Half duplex mode, and auto MDI/MDI-X connection	
Connector	8-pin RJ-45 * 5	
Isolation Protection	Built-in 1.5KV	
Technology		
Standards	IEEE 802.3 for 10BaseT IEEE 802.3u for 100BaseT(X) and 100BaseFX IEEE 802.3x for Flow Control IEEE 802.1D-2004 for Spanning Tree Protocol IEEE 802.1w for Rapid STP IEEE 802.1s for Multiple Spanning Tree Protocol IEEE 802.1Q for VLAN Tagging IEEE 802.1p for Class of Service IEEE 802.1X for Authentication	
Network Protocols	ICMP,IP,TCP,UDP,DHCP,BOOTP,Telnet,DNS,HTTP,ARP	
Flow Control	802.3X flow control frames on both transmit and receive sides	
Configure Options	Web Page,Windows Utility	
OS support	Windows Serial / Linux real / TTY / UNIX	
Switch Properties		
Priority Queues	4-level per port	
Max. Number of Available VLANs	16	
VLAN ID Range	VID 1 to 4094	
IGMP Table	Up to 1K	
MAC Table Size	2K	
Rate Control	Range 0-100Mbps	
LED Indicators	PWR	Power Indicator
	F/H.x	Indicate full duplex or half duplex
	LINK	Indicate network connections status
	10/100M	Speed Indicator
Power Requirements		
Input Voltage	12VDC (12 to 24VDC),redundant dual inputs	
Protection	Over-current and over-voltage protection	
Connector	Removable 4-contact terminal blocks	
Physical Characteristics		
Installation	DIN-Rail Mounting	
Housing	Aluminum & Iron	
Weight	1.0Kg	
Dimensions	106 × 54 × 136 mm(4.17 × 2.13 × 5.35 in)	
Environmental Limits		
Operating Temperature	-25 ~ 70°C (-13 ~ 158°F)	
Storage Temperature	-40 ~ 85°C (-40 ~ 176°F)	
Ambient Relative Humidity	5% to 95%(non-condensing)	
Standards and Certifications	RoHS, CE, FCC	